

Type

Project

Notes



ADVANT  
LIGHTING



## AP-AV3RFD

### Ultra-Thin Profile Square Regressed Trim

Housing-free light engine install quickly.

The perfect option for a flush finish with ceiling materials.

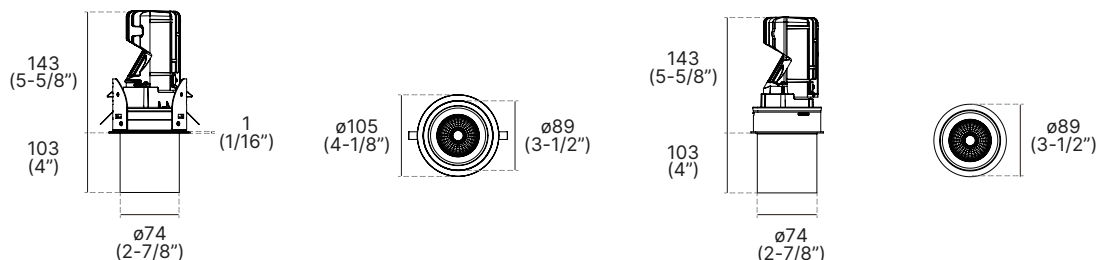
Ease of installation, fast-mount features.



IP20  
RATED & TESTED

5 YEARS  
LIMITED WARRANTY  
INCLUDED

## TECHNICAL DRAWING



TR - Flangeless Trim

Units in Metric

## PRODUCT SPECIFICATIONS

Summary	AP-AV3RFD-AR	AP-AV3RFD-TR
Dimensions	Ø 105mm x 243mm	Ø 89mm x 243mm
Power Consumption	14 W, 23 W	14 W, 23 W
Lumen Output	800-1150 lm	800-1150 lm
Input Voltage	120-277V AC	120-277V AC
Colour Temperature	2700K, 3000K, 3500K, 4000K, CCT, WD	2700K, 3000K, 3500K, 4000K, CCT, WD
Finish	Gold, Chrome, Brushed Chrome, Matte White, Brushed Nickel, Satin Nickel, Matte Black, Aluminum	
CRI	Ra90	Ra90
Beam Angle	19° (Medium Spot)	19° (Medium Spot)
Warranty	5 Years	5 Years

## ORDER FORM

1	2	3	4	5	6	7
1. FAMILY	2. SIZE	3. WATTAGE	4. VOLTAGE	5. CCT		
AP-AV3RFD	AR Ø105 x 243	14 14W	A 120-277V AC	27 2700K	35 3500K	CCT Colour Tuning
	TR Ø89 x 243	23 23W		30 3000K	40 4000K	WD Warm Dimming
6. BEAM ANGLE	7. DIMMING	8. FINISH				
19 19°	DM 0-10V Dimming	CH Chrome	BC Brushed Chrome	WH White	GD Gold	
	TRI TRIAC Dimming	AL Aluminum	BN Brushed Nickel	BK Black	SN Satin Nickel	



advantlighting.ca  
(604) 207 9879

© Advant Lighting, LTD. All rights reserved. We reserve the right to change design, materials and finish in any way that will not alter installed appearance or reduce function and performance.

#105-8288 North Fraser Way,  
Burnaby, BC V3N 0E9

Type

Project

Notes



ADVANT  
LIGHTING

## OPTIONS & ACCESSORIES

### MOUNTING PLATE

Ideal for unfinished basements and other renovation projects.  
Choice of Square or Round for 3.5" Remodel housings.  
Adjustable mounting bars included.



**PA3NW** 3.5" Square, 3.5" Round

### EMERGENCY DRIVER

Battery life: 120 minutes  
Available only for 3.5" and 4" New Construction housings.  
Housing Option: **-EM** suffix



**EM**

### STEP-DOWN TRANSFORMER

Available only for 3.5" and 4" Remodel and New Construction housings.



**STD-60M** 3.5" Square, 3.5" Round

### LENSES

Choice of replacement lenses for on-site modification of light diffusion.  
Shower Light trims available only with Frosted lens.  
\*Wall Wash trims available only with Frosted/Frosted lens.



**CL** Clear



**FR** Frosted



**WW** Wall Wash



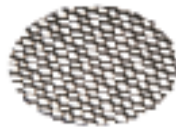
**LN** Linear



**SL** Solite



**PR** Prismatic



**HC** Honeycomb



advantlighting.ca  
(604) 207 9879

© Advant Lighting, LTD. All rights reserved. We reserve the right to change design, materials and finish in any way that will not alter installed appearance or reduce function and performance.

#105-8288 North Fraser Way,  
Burnaby, BC V3N 0E9

Type

Project

Notes


**ADVANT**  
LIGHTING

## HOUSINGS



### IC AIR TIGHT HOUSING - ROUND

ICAT	6	R	3	V	
1. MODEL	2. HOUSING	3. TYPE	4. SERIES	5. DRIVER	6. PERFORMANCE
<b>ICAT</b> Insulated Housing Air Tight	<b>6</b> 410 x 254 (16" x 10")	<b>R</b> Round	<b>3</b> 3-1/2"	<b>V</b> 120-277V AC	<b>14</b> 14 W 1300 lm <b>23</b> 23 W 1900 lm



### IC AIR TIGHT HOUSING - SQUARE

ICAT	6	S	3	V	
1. MODEL	2. HOUSING	3. TYPE	4. SERIES	5. DRIVER	6. PERFORMANCE
<b>ICAT</b> Insulated Housing Air Tight	<b>6</b> 410 x 254 (16" x 10")	<b>S</b> Square	<b>3</b> 3-1/2"	<b>V</b> 120-277V AC	<b>14</b> 14 W 1300 lm <b>23</b> 23 W 1900 lm



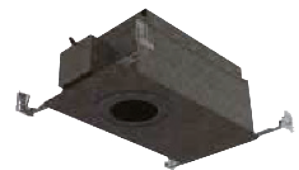
### REMODEL HOUSING

REA	3	S	
1. MODEL	2. SERIES	3. DRIVER	4. PERFORMANCE
<b>REA</b> Remodel Housing	<b>3</b> 3-1/2"	<b>V</b> 120-277V AC	<b>1</b> 1300 lm (1000 lm with 2-1/2") <b>2</b> 1900 lm <b>L</b> WD or CT CT: Colour Tuning WD: Warm Dimming



### NEW CONSTRUCTION HOUSING

NWA		3	V		
1. MODEL	2. TYPE	3. SERIES	4. DRIVER	5. PERFORMANCE	6. OPTIONS
<b>NWA</b> New Construction Housing	<b>S</b> Square <b>R</b> Round	<b>3</b> 3-1/2"	<b>V</b> 120-277V AC	<b>1</b> 1300 lm (1000 lm with 2-1/2") <b>2</b> 1900 lm <b>L</b> WD or CT	<b>EM</b> Emergency Driver (not available with WD and CT)



### IC INSULATED HOUSING

ISA		3	V	
1. MODEL	2. TYPE	3. SERIES	4. DRIVER	5. PERFORMANCE
<b>ISA</b> Insulated Housing	<b>S</b> Square <b>R</b> Round	<b>3</b> 3-1/2"	<b>V</b> 120-277V AC	<b>1</b> 1300 lm (1000 lm with 2-1/2") <b>2</b> 1900 lm <b>L</b> WD or CT


 advantlighting.ca  
(604) 207 9879

© Advant Lighting, LTD. All rights reserved. We reserve the right to change design, materials and finish in any way that will not alter installed appearance or reduce function and performance.

 #105-8288 North Fraser Way,  
Burnaby, BC V3N 0E9