

Type

Project

Notes



ADVANT
LIGHTING



AP-FR4D

Round Adjustable Regressed Trim

Housing-free light engine install quickly.

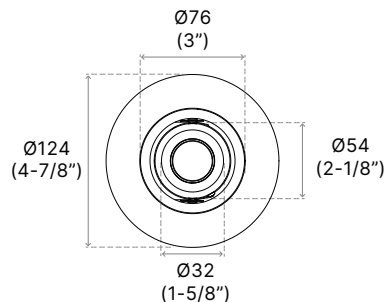
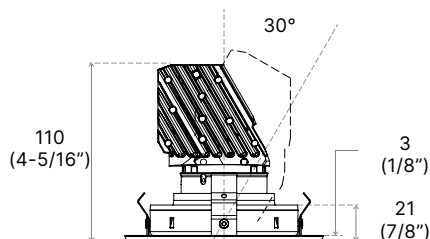
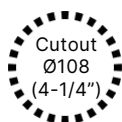
Innovative tilting angle design.

Ease of installation, fast-mount features.

*Ra80 is only with 2700K and 3000K



TECHNICAL DRAWING



Units in Metric

PRODUCT SPECIFICATIONS

Summary	AP-FR-4D-10	AP-FR-4D-15
Dimensions	Ø124mm x 110mm	Ø124mm x 110mm
Power Consumption	10 W	15 W
Lumen Output	764 lm	1048 lm
Input Voltage	120-277V AC	120-277V AC
Colour Temperature	2700K, 3000K, 3500K, 4000K	2700K, 3000K, 3500K, 4000K, WD
Finish	Gold, Chrome, White, Brushed Nickel, Satin Nickel, Black	Gold, Chrome, White, Brushed Nickel, Satin Nickel, Black
CRI	*Ra80, Ra90	*Ra80, Ra90
Beam Angle	16° (Spot), 32° (Narrow Flood), 48° (Flood)	16° (Spot), 32° (Narrow Flood), 48° (Flood)
Warranty	5 Years	5 Years

ORDER FORM

1	2	3	4	5	6	7	8	9
1. FAMILY	2. SIZE	3. WATTAGE	4. VOLTAGE	5. CCT				
AP-FR	4D Ø124 x 110	10 10W 15 15W	A 120-277V AC	27 2700K 30 3000K	35 3500K 40 4000K	WD Warm Dimming (15W Only)		
6. DIMMING	7. CRI	8. BEAM ANGLE	9. FINISH					
DM 0-10V Dimming TRI TRIAC Dimming	80 *Ra80 90 Ra90	16 16° 32 32° 48 48°	CH Chrome AL Aluminum SN Satin Nickel BN Brushed Nickel WH White BK Black					



advantlighting.ca
(604) 207 9879

© Advant Lighting, LTD. All rights reserved. We reserve the right to change design, materials and finish in any way that will not alter installed appearance or reduce function and performance.

#105-8288 North Fraser Way,
Burnaby, BC V3N 0E9

Type

Project

Notes



ADVANT
LIGHTING

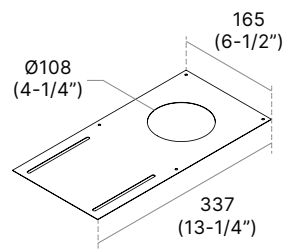
OPTIONS & ACCESSORIES

MOUNTING PLATE

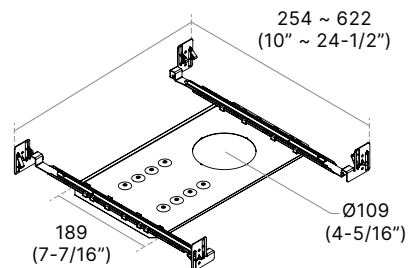
Ideal for unfinished basements and other renovation projects.
Choice of Square or Round for 3.5" Remodel housings.
Adjustable mounting bars included.



CODE	DESCRIPTION	HOLE DIAMETER	DIMENSIONS
P4RN	Without Mounting Bars	Ø108 (4-1/4")	165 x 337 (6-1/2" x 13-1/4")
P4RNW	With Mounting Bars	Ø109 (4-5/16")	388 x 254 ~ 622 (15-5/16" x 10" ~ 24-1/2")



P4RN



P4RNW

LENSES

Choice of replacement lenses for on-site modification of light diffusion.
Shower Light trims available only with Frosted lens.
*Wall Wash trims available only with Frosted/Frosted lens.



CL Clear



FR Frosted



LN Linear



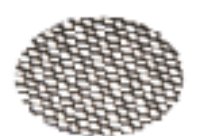
FC Frosted Clear Center



SL Solite



PR Prismatic



HC Honeycomb



advantlighting.ca
(604) 207 9879

© Advant Lighting, LTD. All rights reserved. We reserve the right to change design, materials and finish in any way that will not alter installed appearance or reduce function and performance.

#105-8288 North Fraser Way,
Burnaby, BC V3N 0E9

Type

Project

Notes



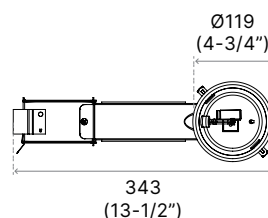
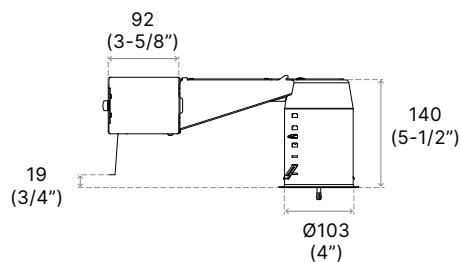
HOUSINGS



REMODEL IC

REUR	4	V	
------	---	---	--

1. MODEL	2. SERIES	3. VOLTAGE	4. DIMMING
REUR Remodel Housing	4 4"	V 120-277V AC	E1 ELV 10W E2 ELV 15W EB2 ELV (+VALUE) 15W D1 0-10V 10W D2 0-10V 15W ND Non-dimmable 15W



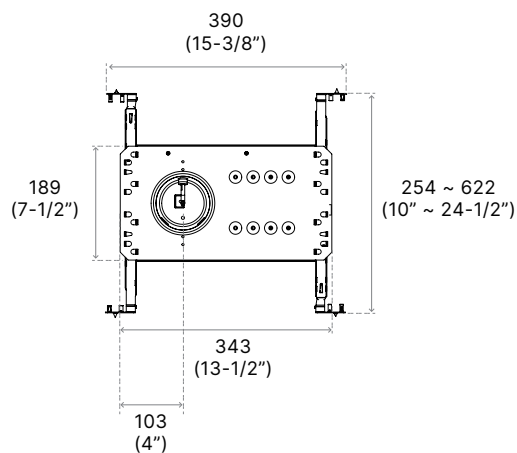
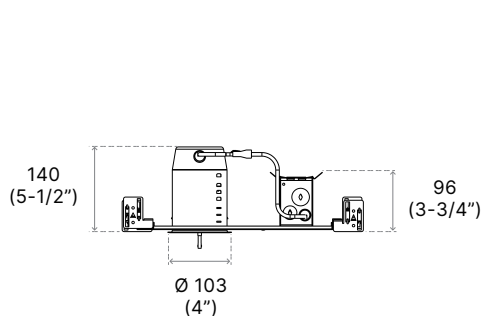
NEW CONSTRUCTION IC

NWUR	4	V	
------	---	---	--

1. MODEL	2. SERIES	3. VOLTAGE	4. DIMMING
NWUR New Construction Housing	4 4"	V 120-277V AC	E1 ELV 10W E2 ELV 15W EB2 ELV (+VALUE) 15W D1 0-10V 10W D2 0-10V 15W ND Non-dimmable 15W

5. OPTION

EM Emergency Back up



Type

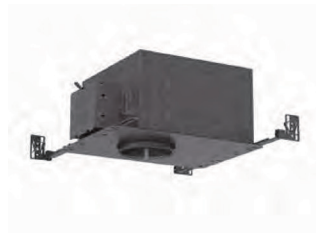
Project

Notes



ADVANT
LIGHTING

HOUSINGS



Classic New Construction IC

ISUR		4		V					
1. MODEL		2. SERIES		3. VOLTAGE		4. DIMMING			
ISUR	IC and Air Tight Housing	4	4"	V	120-277V AC	E1	ELV 10W	D1	0-10V 10W
						E2	ELV 15W	D2	0-10V 15W
						EB2	ELV (+VALUE) 15W	ND	Non-dimmable 15W

